

FF FIR LODGE SW15

Approx. gross internal area 494 Sq Ft. / 45.9 Sq M

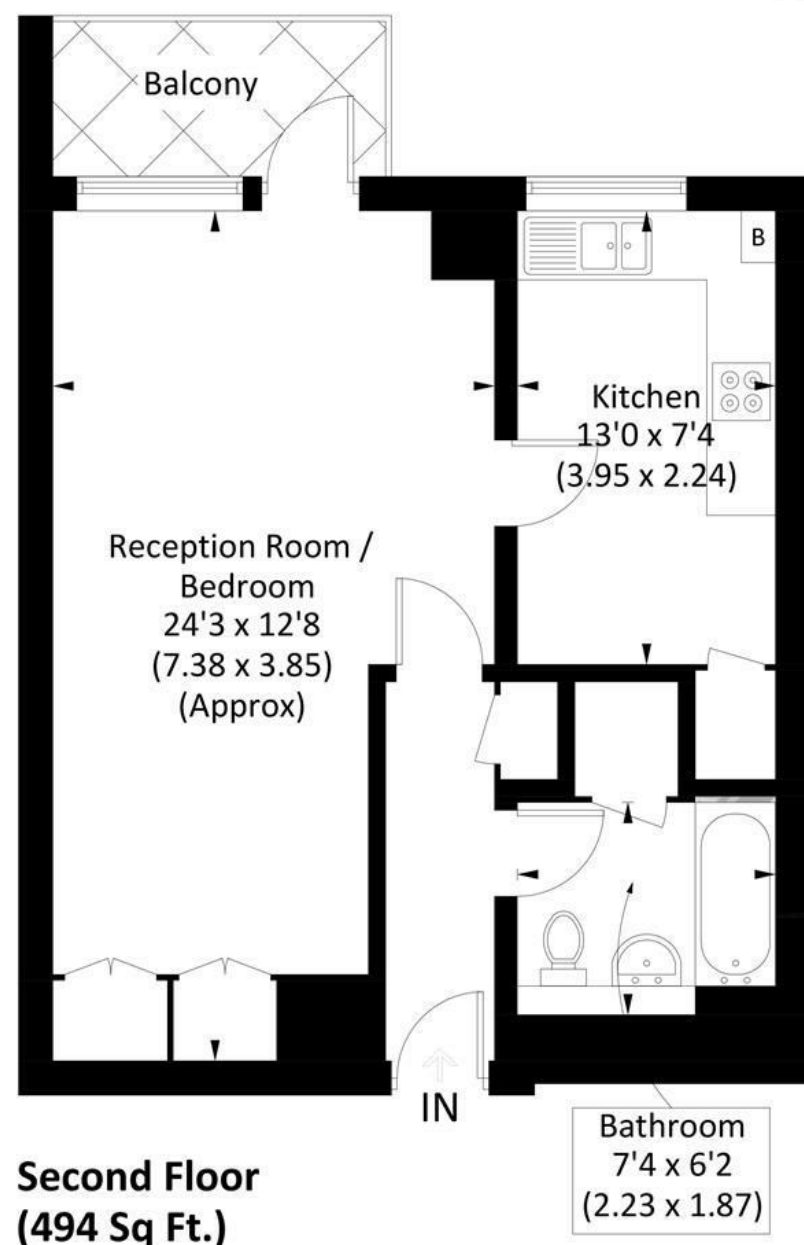


Illustration for identification purposes only, measurements are approximate, not to scale. FloorplansUsketch.com © 2022 (ID912239)

DISCLAIMER•These particulars are intended to give a fair and substantially correct overall description for the guidance of intending purchasers and do not constitute an offer or part of a contract. Prospective purchasers and/or lessees ought to seek their own professional advice.

•All descriptions, dimensions, areas, references to condition and necessary permissions for use and occupation and other details are given in good faith and are believed to be correct, but any intending purchasers should not rely on them as statements or representations of fact, but must satisfy themselves by inspection or otherwise as to the correctness of each of them.

•All measurements are approximate.



Fir Lodge, London, SW15

A fantastic and spacious studio apartment with private balcony and off-street parking situated on the second floor (with lift) of this popular development in Putney. Offered on an unfurnished bass, the accommodation comprises an entrance hallway, bright reception room with doors to the private balcony, separate, partitioned sleeping area with fitted wardrobes, fitted kitchen and bathroom with shower over the bath. Fir Lodge is a well maintained block ideally located for the amenities on the Dover House parade as well as easy access to Putney High Street, the common and Barnes mainline station. Available now.



- LARGE STUDIO APARTMENT
- PARTITONED SLEEPING AREA
- BATHROOM
- OFF-STREET PARKING
- EPC B
- RECEPTION ROOM
- FITTED KITCHEN
- PRIVATE BALCONY
- QUIET LOCATION
- COUNCIL TAX BAND C

Per Month
£1,400 Per Month

